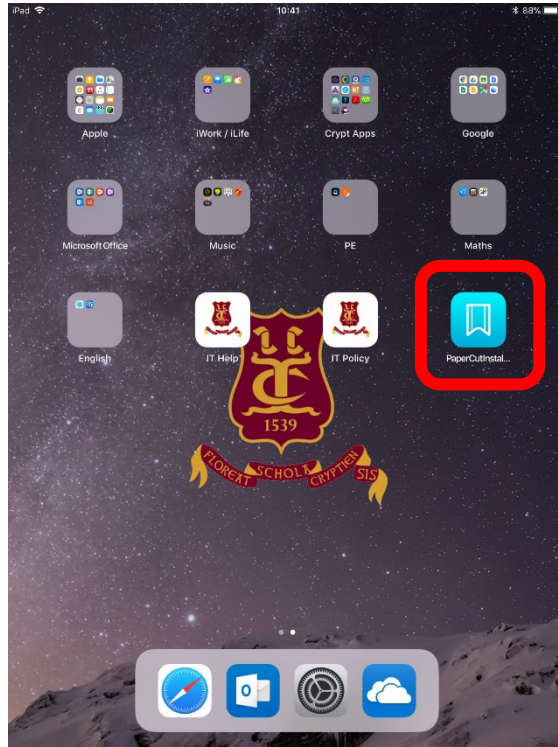




## Setting up PaperCut on the iPad

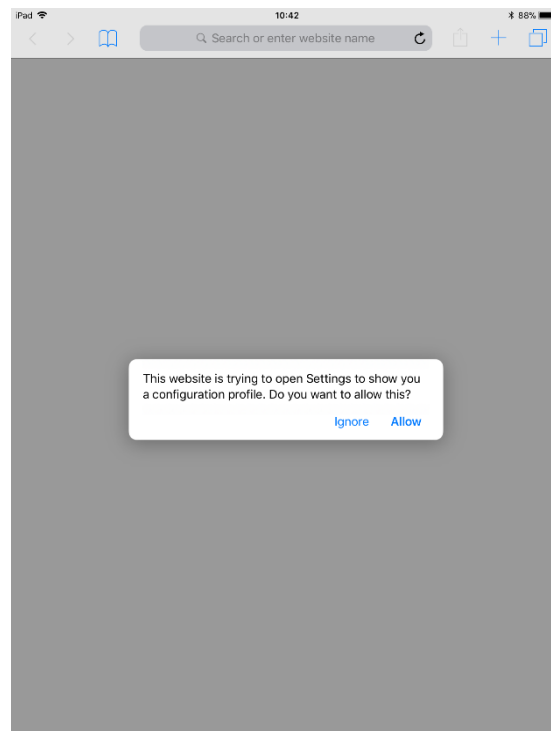
Step 1:

On your iPad click the PaperCut Installer app (Circled below)



Step 2:

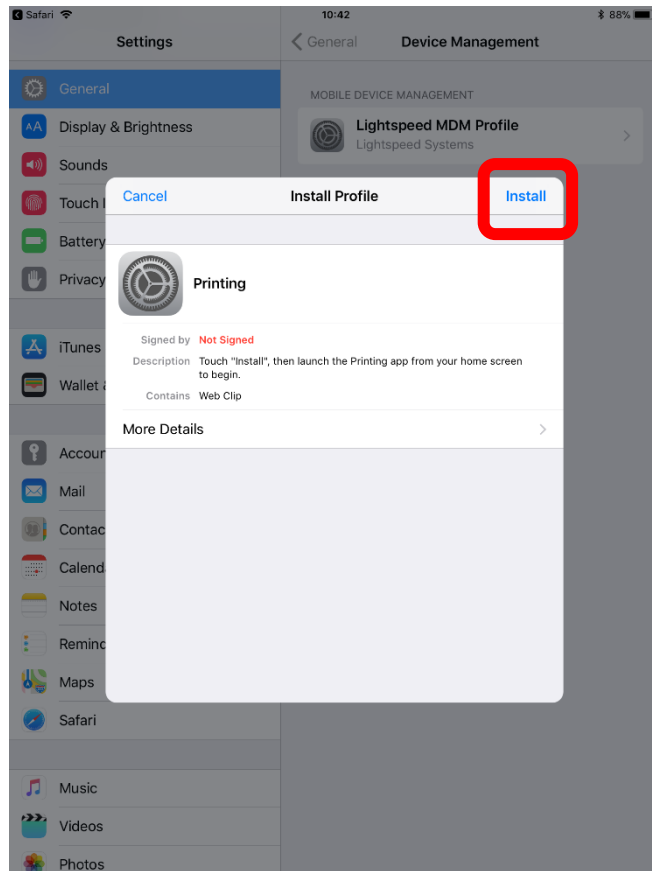
Next, click 'Allow'





Step 3:

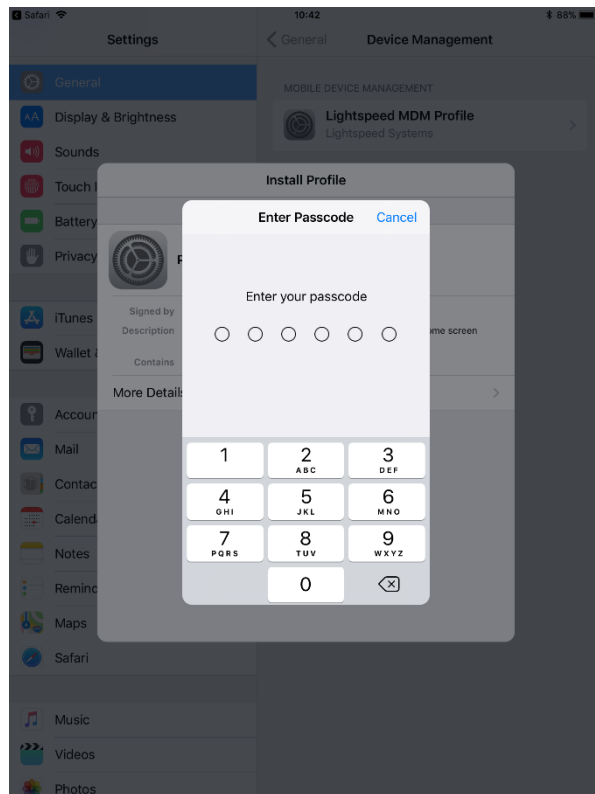
The following screen will appear, asking you to install a profile. Click 'Install' at the top right of the pop up.





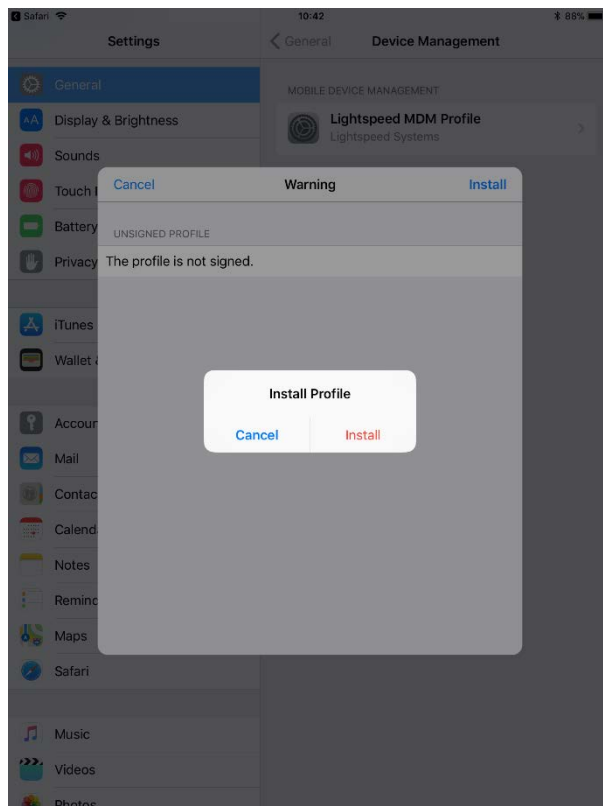
**Step 4:**

If you have a passcode set, it will ask you to confirm this before it can continue.



**Step 5:**

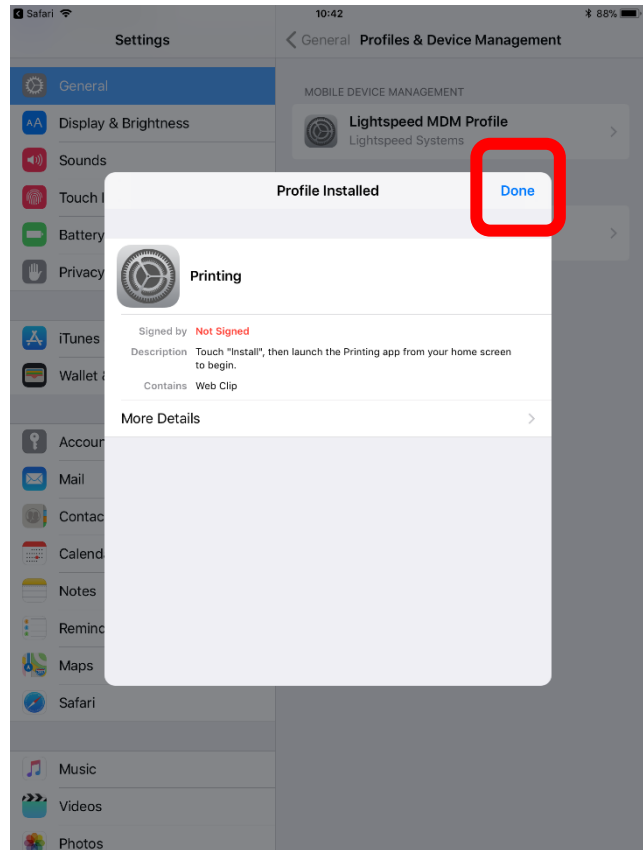
It will ask again to install the profile. Just click 'Install'.





**Step 6:**

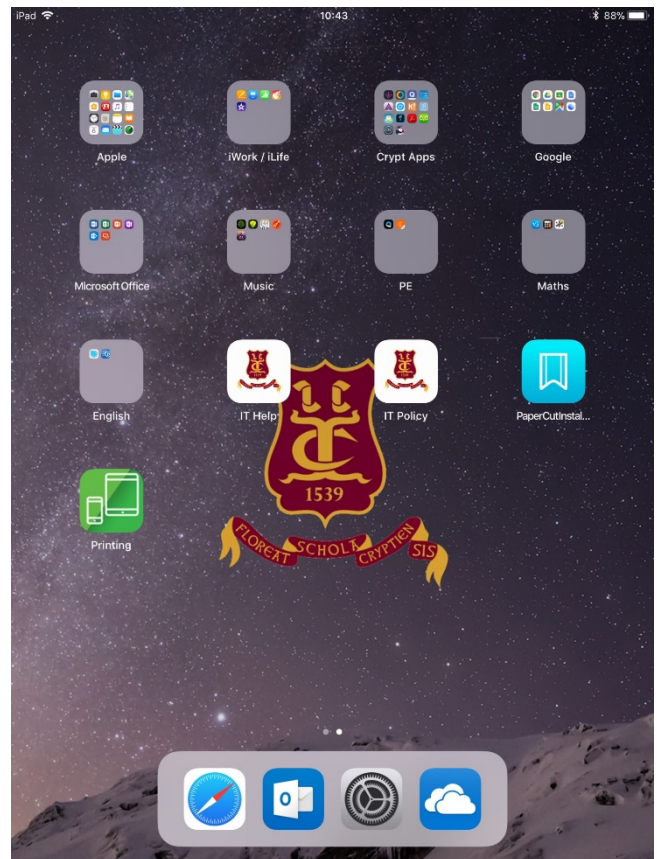
Next it will state that the profile has been installed. Click 'done' and press the Home Button to go to the home screen.





### Step 7:

Now, you will see that you have an app on your home screen called 'Printing'. Open this app....



### Step 8:

Log into the PaperCut app using your school username and password.

\*You can check 'Remember me' if you don't want to enter your username and password every time you want to print.

